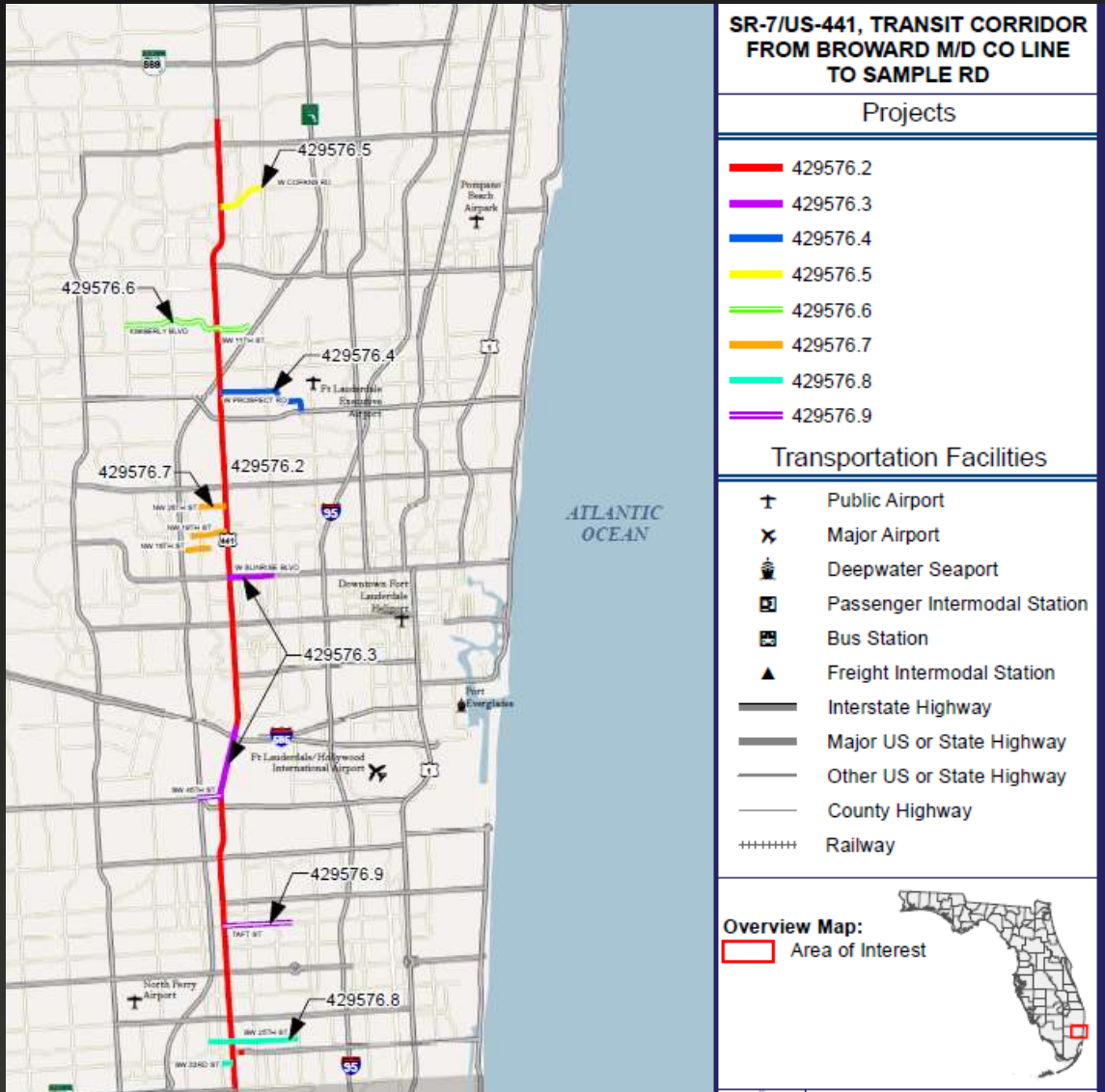


SR7/US-441, Transit Corridor
Phase IV
Taft Street Mobility Improvements



SR 7/US 441



Project Objectives:

- To enhance the transit passenger, bicycle and pedestrian experience, through mobility and safety improvements along SR-7.
- Improvements were developed in SR-7 Corridor study 429576-1, <https://www.browardmpo.org> (Approved by Broward MPO July 14 2016, Improvements were grouped into 8 projects)

Scope

- 429576-9 SW 45th St and Taft St mobility improvements

Current Construction Estimate

\$2.5 Million

Schedule:

Design start: October 2022

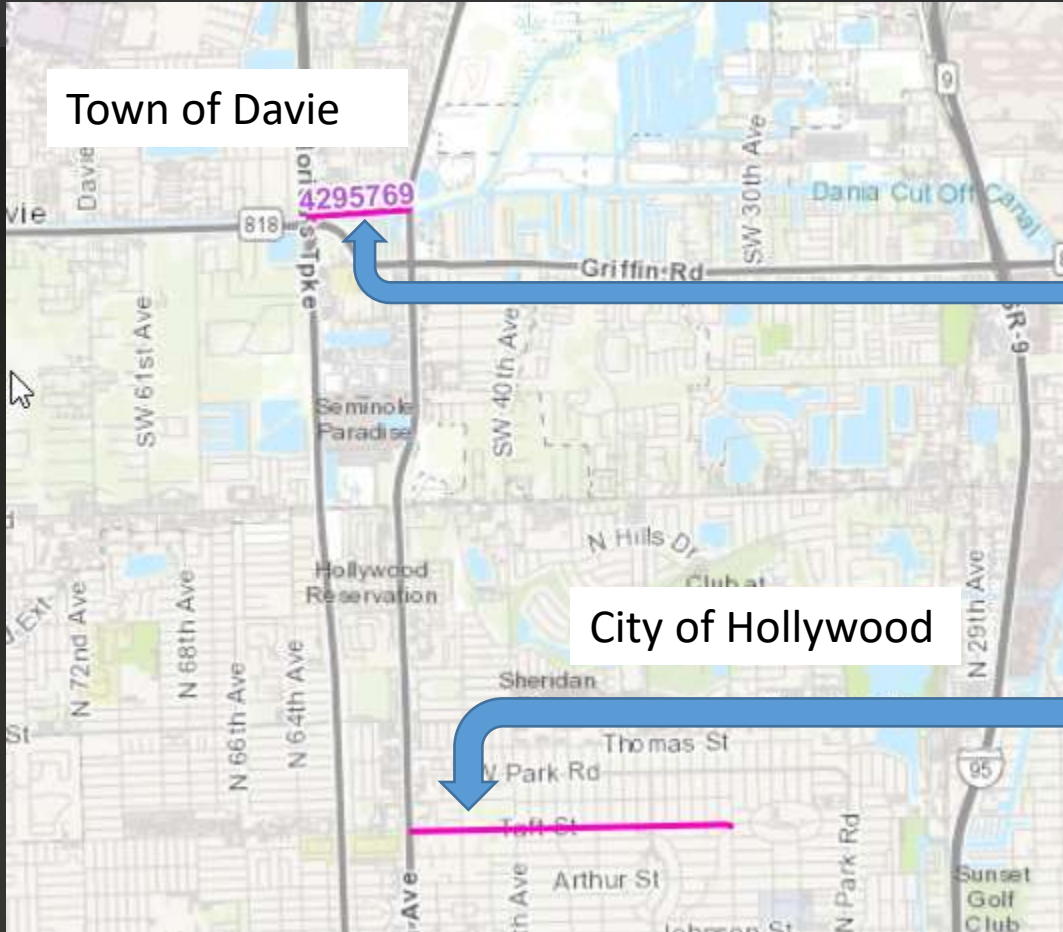
Design complete: April 2026

Letting: July 2026

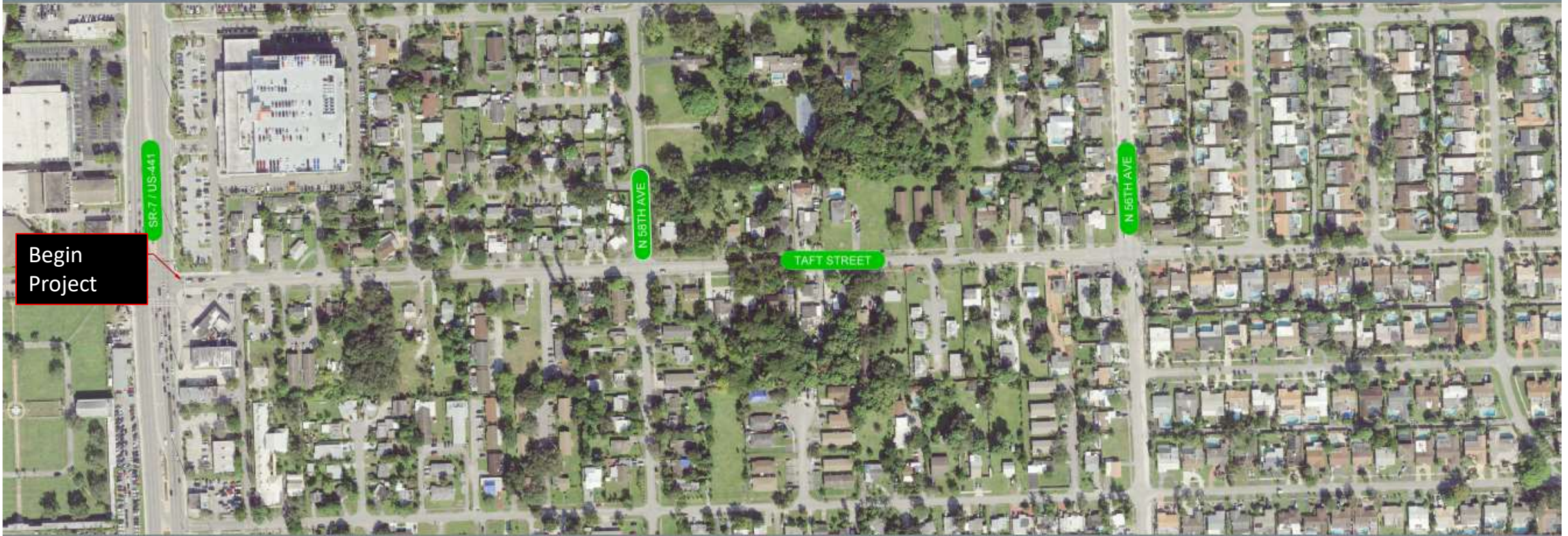
SR 7/US 441

429576-9, SW 45th St and Taft St

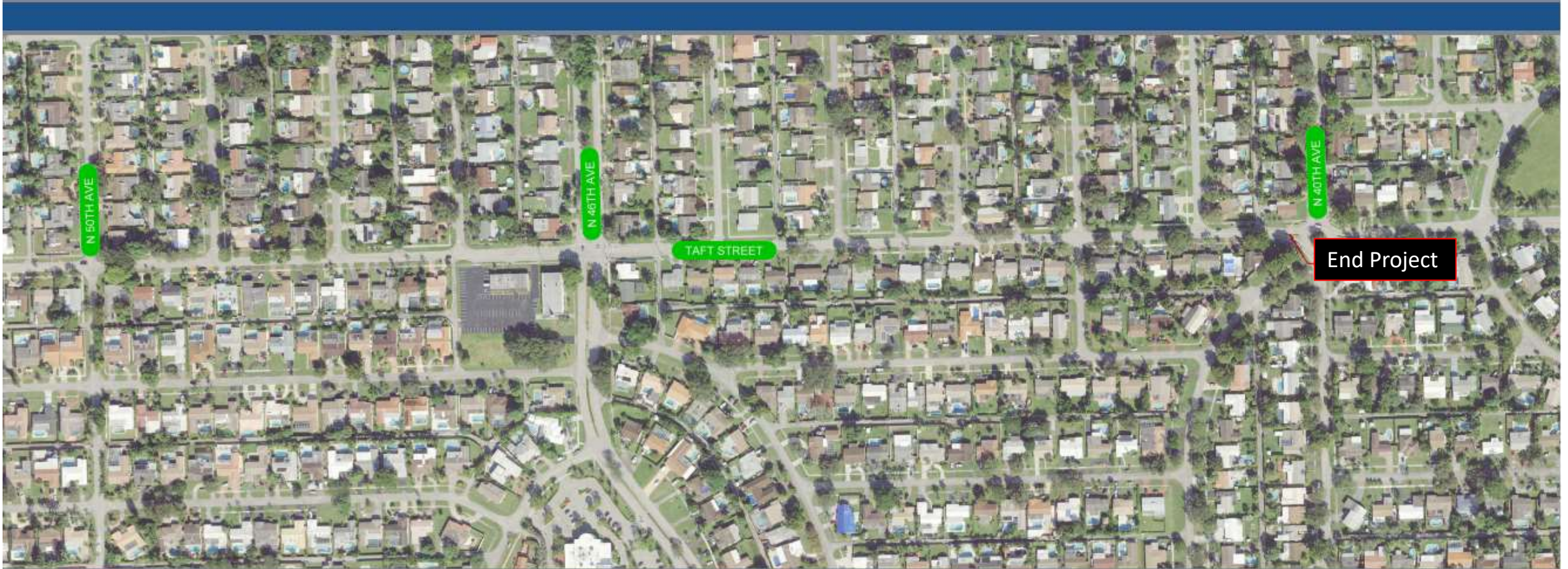
- Davie (Resolution received)
- Hollywood (Resolution received)



Segment	Improvements
SW 45TH ST. FROM TURNPIKE TO SR-7	Add 5' sidewalk on north side of the road
TAFT ST. FROM SR-7 TO 40TH AVE	Widen pavement to provide bicycle facility.

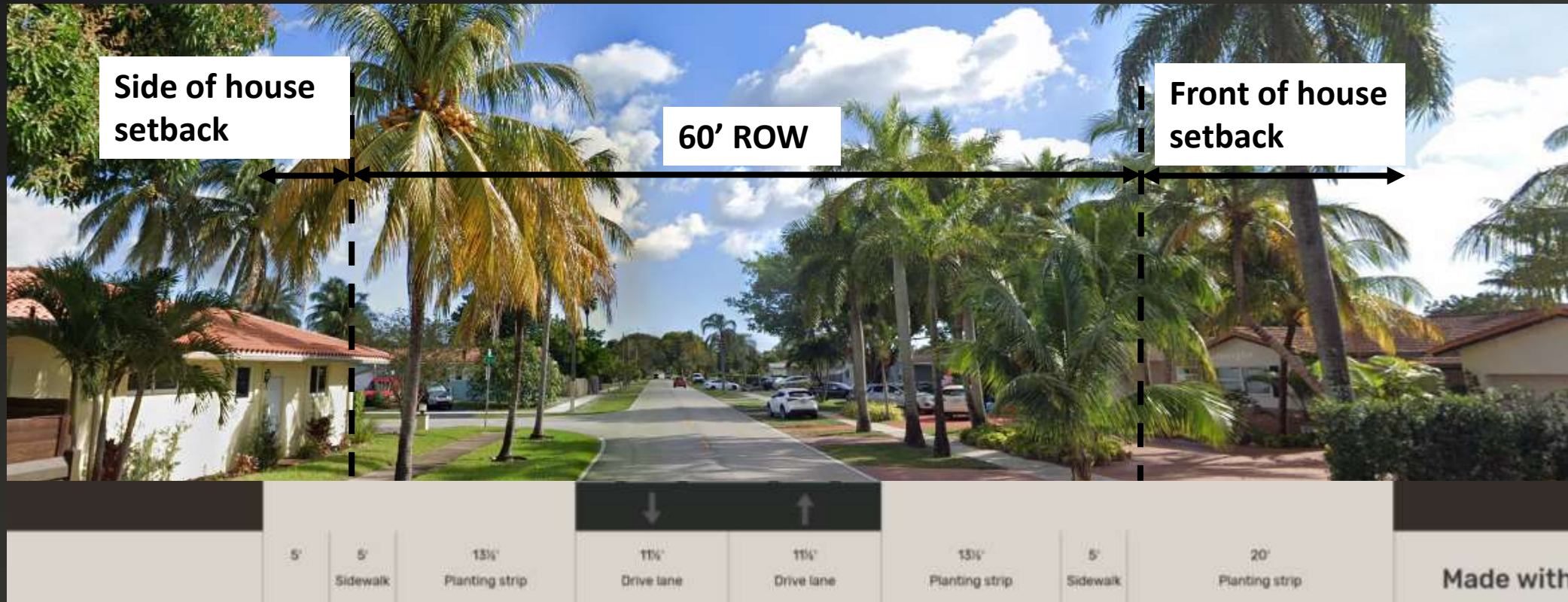


Taft Street Project Limits



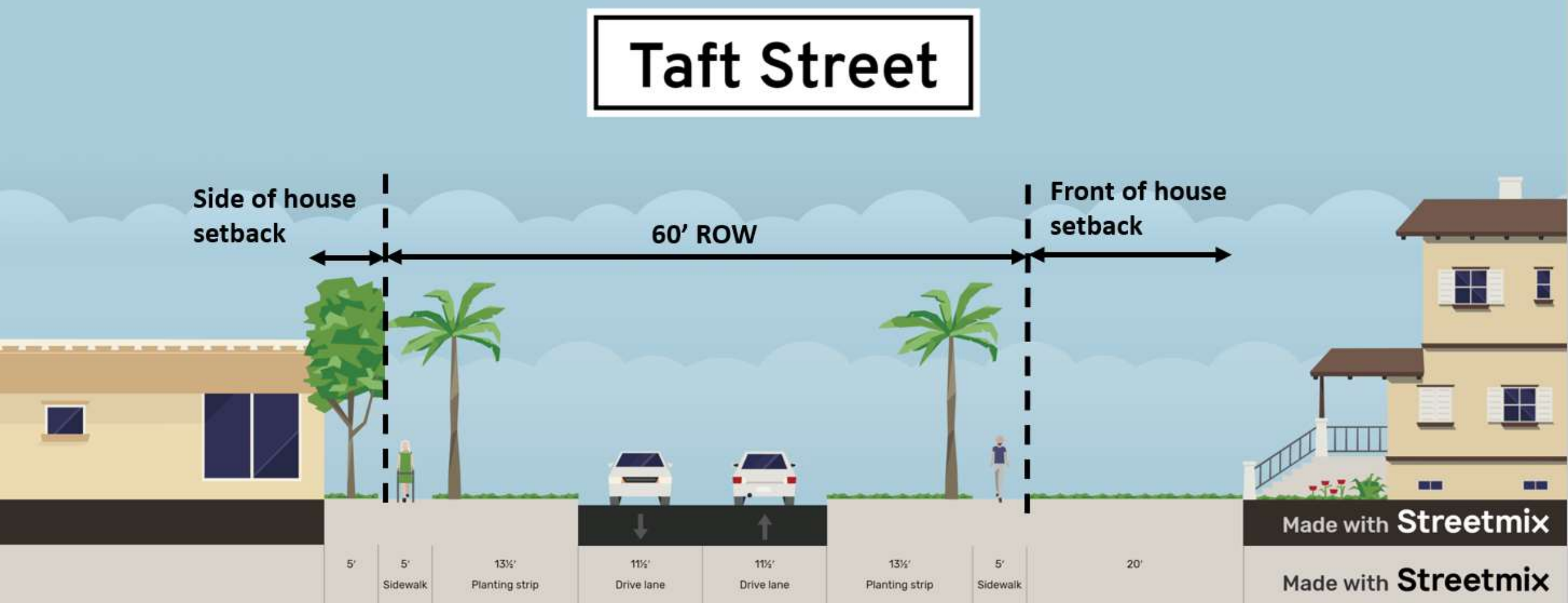
Taft Street Project Limits

Existing Condition (11.5' Lanes – No Bike Lanes – 5' Sidewalks)



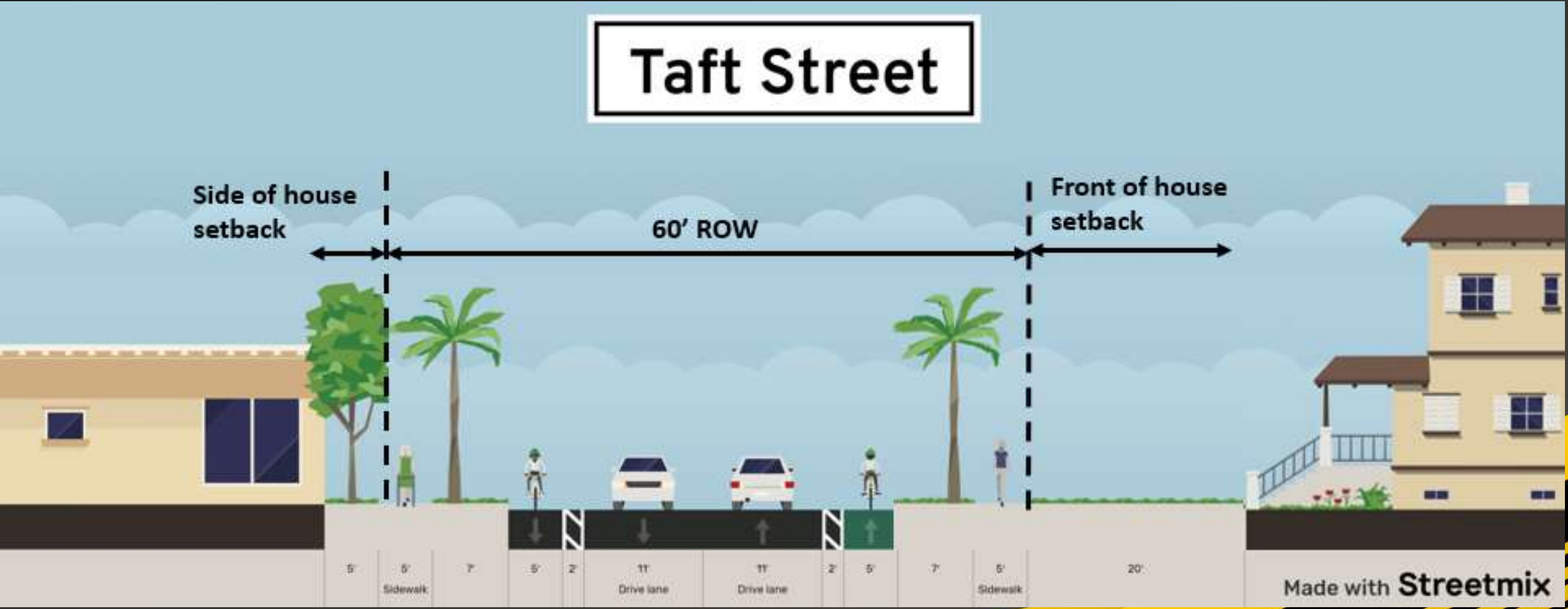
Existing Condition (11.5' Lanes – No Bike Lanes – 5' Sidewalks)

Taft Street



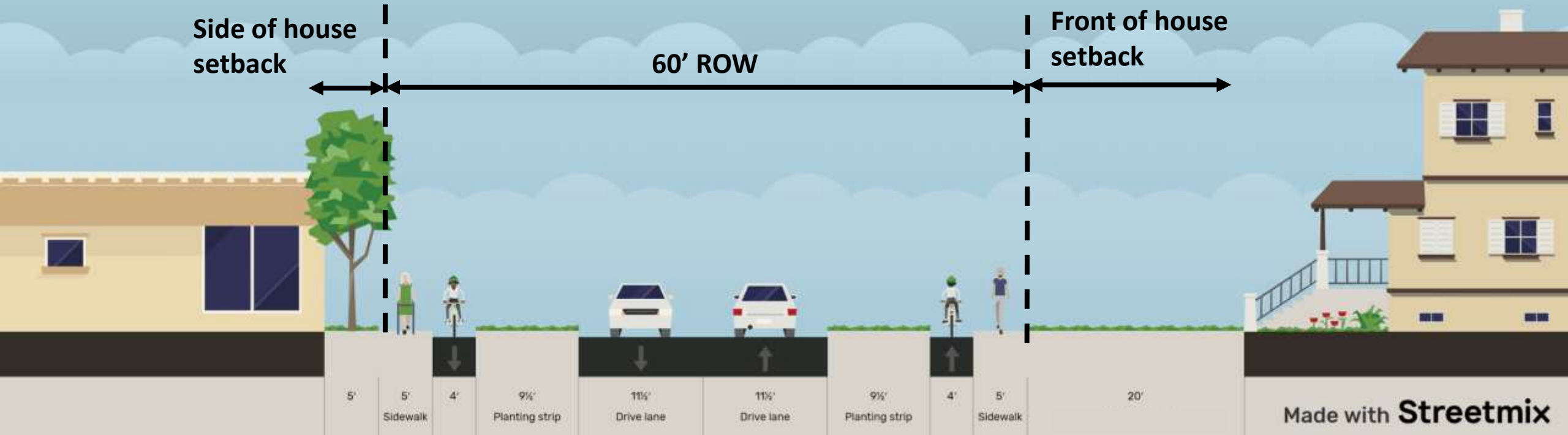
Alternative 1 (11' Lanes – Buffered Bike Lanes – 5' Sidewalks)

Taft Street



Alternative 2 (11' Lanes – Separated bike lane)

Taft Street



Buffered bicycle lanes

Buffered bicycle lanes use a striped or painted buffer on the roadway surface as separation between bicyclists and adjacent vehicles.

Bicycle lanes adjacent to buffer space are the current standard for Broward County and FDOT roadways. A total width of 6-7 feet is recommended for buffered bicycle lanes, with 2 feet of width representing the buffer space.



Separated Bike Lanes



Separated Bicycle Lanes - also known as Raised Cycle Tracks - effectively transfer the bicycle facilities out of the Roadway Realm and into the Sidewalk Realm. These lanes may be placed at an interim elevation between the Roadway Realm and the Pedestrian Zone, or at the same level as the sidewalk.

Tell us what you think.